

## Instructions of Setting Integration Tool

It is a collection of thermal printer's setting functions, including setting serial port, Ethernet port, language and program update etc. It's powerful and easy to use.

### I. Connect the Printer

Double-click the tool "RongtaPrinterTool.exe", and then it'll show as below:

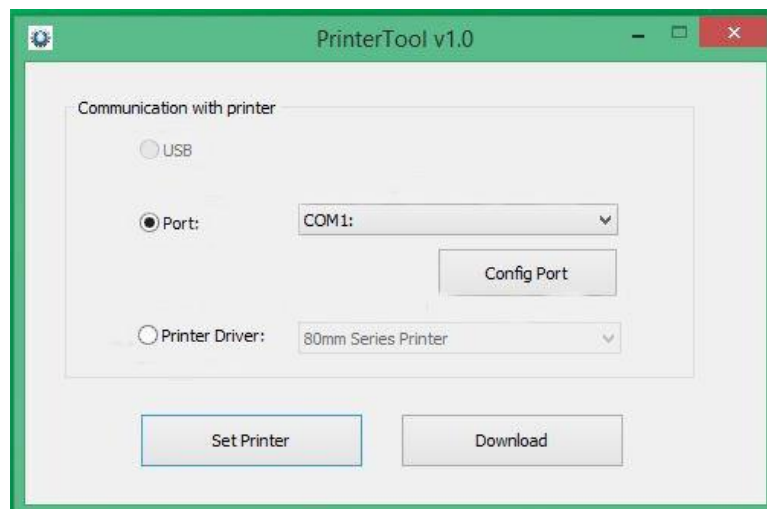


As shown above, there are three ways to connect to the printer.

#### 1. Connect the printer via USB

Please click USB option if the printer is connected by USB port. Then you can proceed to "set printer" or "download". (You can click USB option if the printer is connected by USB port. Or the option is gray and can't be chosen. )

#### 2. Connect the printer via port

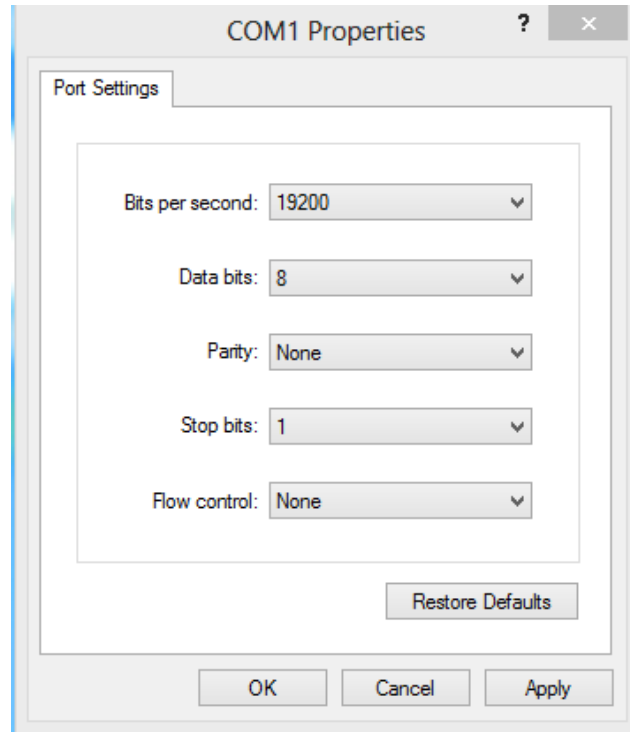


## Xiamen Rongta Technology Co., Ltd.

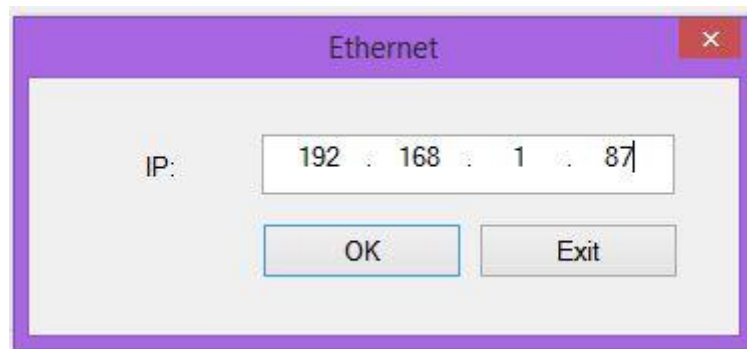
---

Connect the printer after “ConfigPort” via serial port, Ethernet port or parallel port, then proceed to “set printer” or “download”.

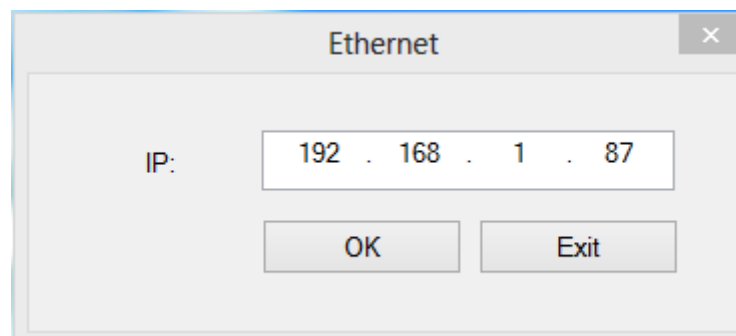
a. Setup port if choose serial port.



b. Setup IP if choose Ethernet port, then connect the printer.



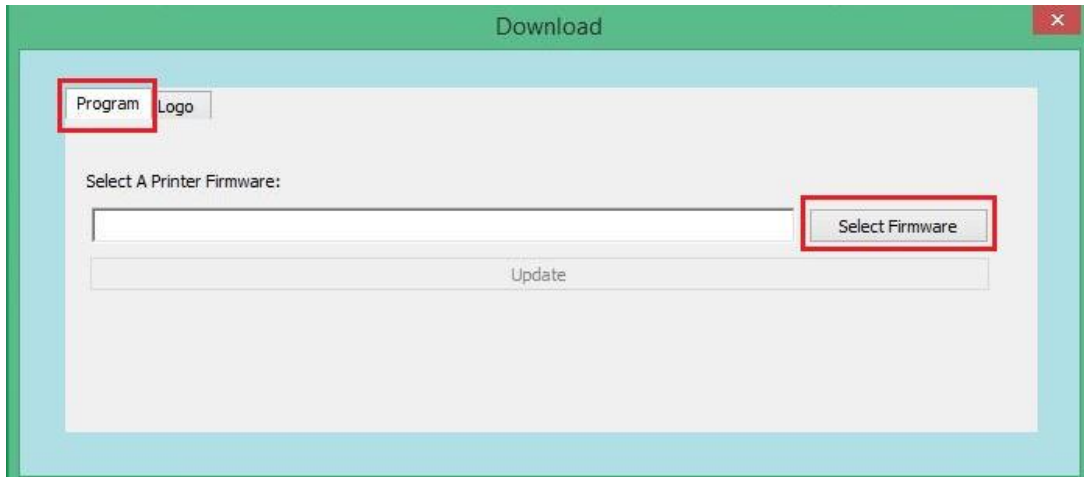
c. Choose parallel



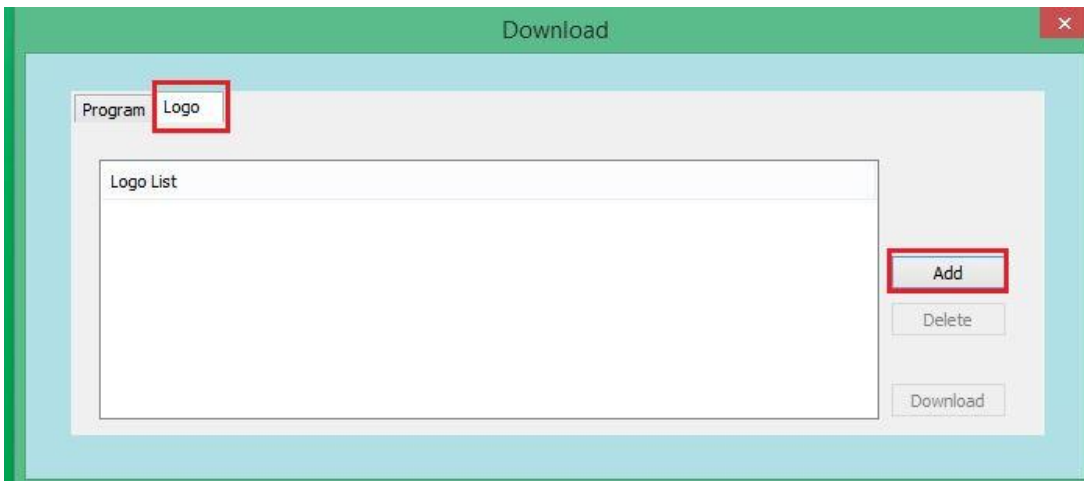
3. Connect printer via common driver (You need to choose and setup corresponding Port of the driver), then proceed to “set printer” or “download”.

### II. “Download” function in the main interface.

Click “download”, then it'll show as below



1. Update program. Click “open files”, select path of corresponding firmware, click “update”, and then update program.
2. It's available to add a picture. Select “logo”, clicks “add”, chooses corresponding path, then add a logo to the printer.



**Note:** In this tool, the logo only supports BMP format images (black and white bitmap, or 32-bit panchromatic bitmap) and other image format does not support.

Supported by the bitmap size has certain requirements, the specific requirements are as follows:

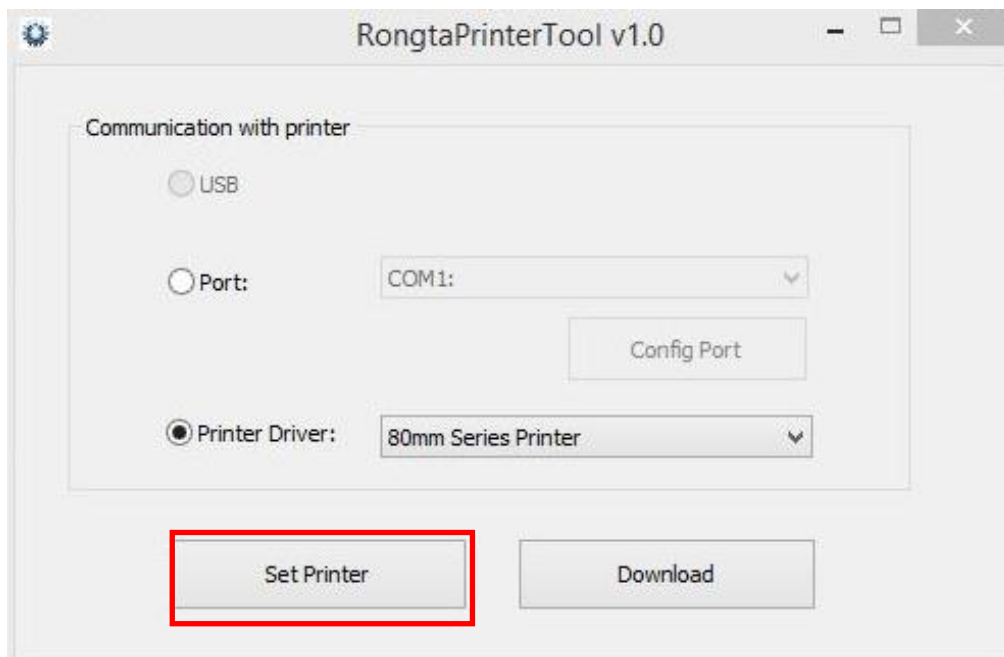
1. Picture size should be less than 64K.

2. The width of the picture:

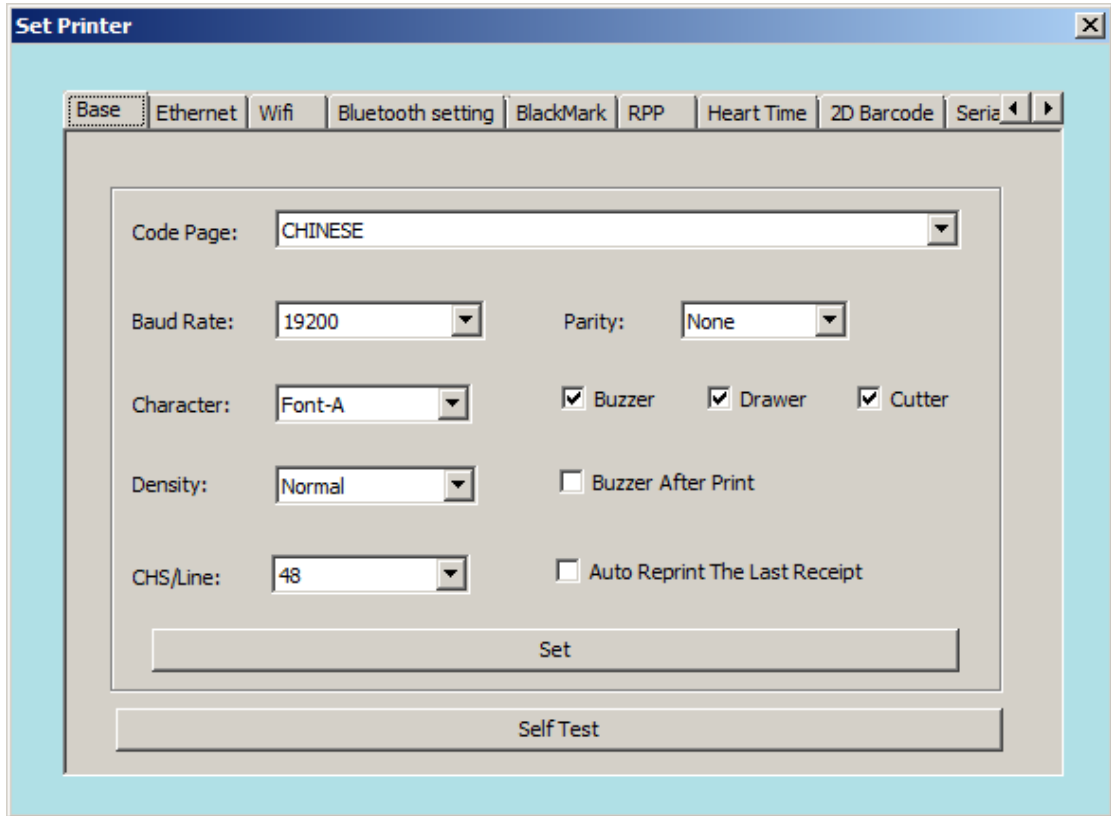
80 the width of the pixel size is less than 567.

58 the width of the pixel size is less than 387.

### III. Main platform “Set Printer” function



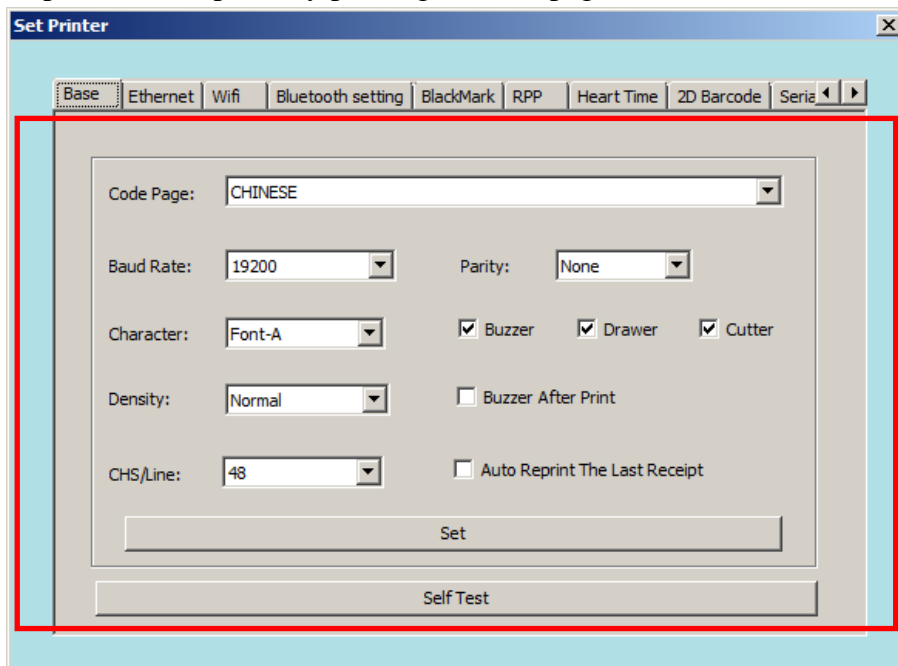
When click the “Set Printer” of the main platform, then it will show as below:



There are 11 platforms.

### 3.1 “Base”

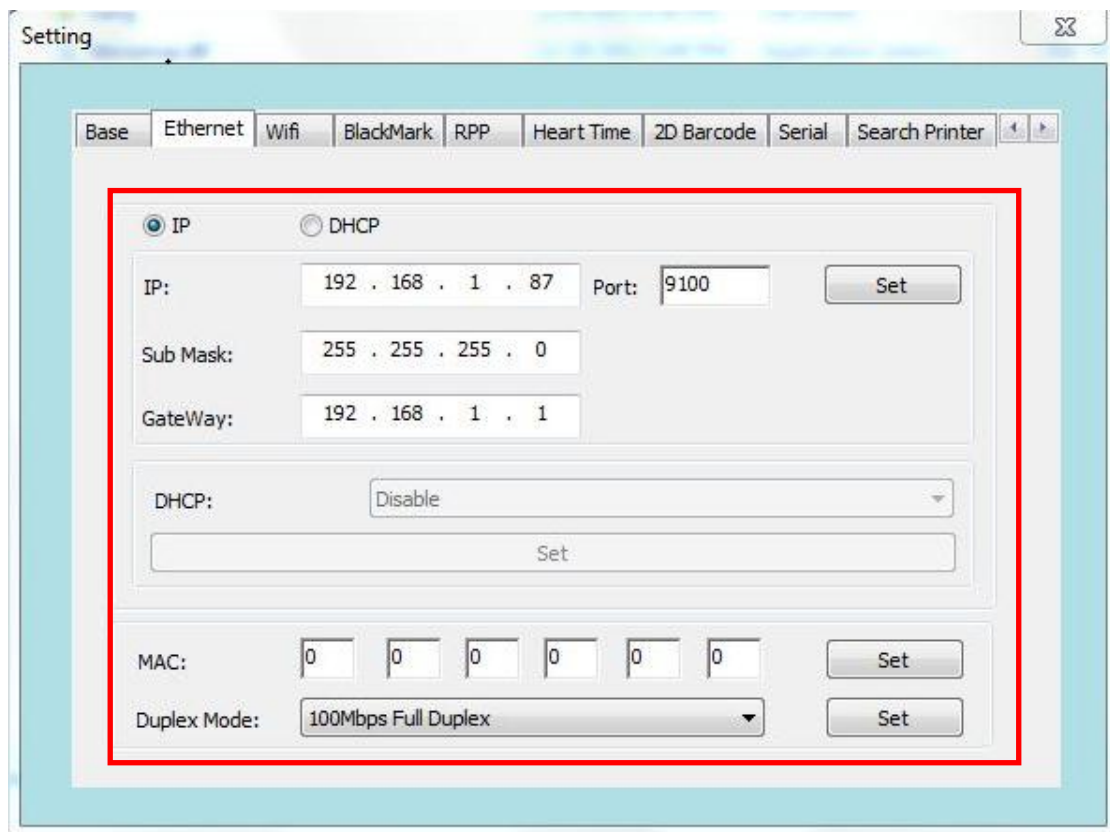
User can set the printer codepage, baud rate, character, density, cash draw and cutter, and precede the update by printing self-test page.



**Note: if user choose serial interface for printing, the user need to be back to the main platform to reconfigure the baud rate for printing self-test page.**

### 3.2“Ethernet”

1. Set the IP address of the printer, change to "192.168.1.87", and set up the communication port.
2. Set the subnet mask of the printer, change to "255.255.255.0".
3. Set the printer gateway to "192.168.1.1".
4. Set the printer function of DHCP, the DHCP default printer is closed, if you need to open, let the printer automatically obtain an IP address.
5. Set the MAC address, and the network transmission rate of setting.



**Note: If the printer connection is either “Ethernet” or “IP of printer drivers” before setting website, the IP is changed. At that time, the printer and the tool has been disconnected. Resetting IP of the tool is needed for the connection. Other connection ways are unaffected.**

## 3.3 “WIFI”

If the printer is equipped with Wifi function, setting Wifi technical parameter is required.

### 3.3.1 Wireless router setup instructions

1. The custom router's wireless settings SSID name, that is, the name of the wireless router.

2. Wireless network security settings.

(1) Can be used "do not open wireless security";

(2) For encryption, it is recommended to use the WPA-PSK/WPA2-PSK method, the authentication type can choose "automatic", "WPA-PSK", "WPA2-PSK" one of them, and the encryption algorithm proposed using AES.PSK password can be defined by its own settings.

(3) Wireless network security settings, you can also use WEP type, the type is not recommended. Must be such as using this type of certification, the certification type can choose "automatic", "open system", "shared key" one, the WEP key format, please choose "ASCII", passwords can be custom input.

### 3.3.2 WIFI printer parameter settings description

1. Open the CD-ROM attached to the integrated set tool "RongtaPrinterTool".

2. In accordance with the set of instructions, the first to ensure that the connection on the printer.

3. Open the settings tool, select "WIFI".

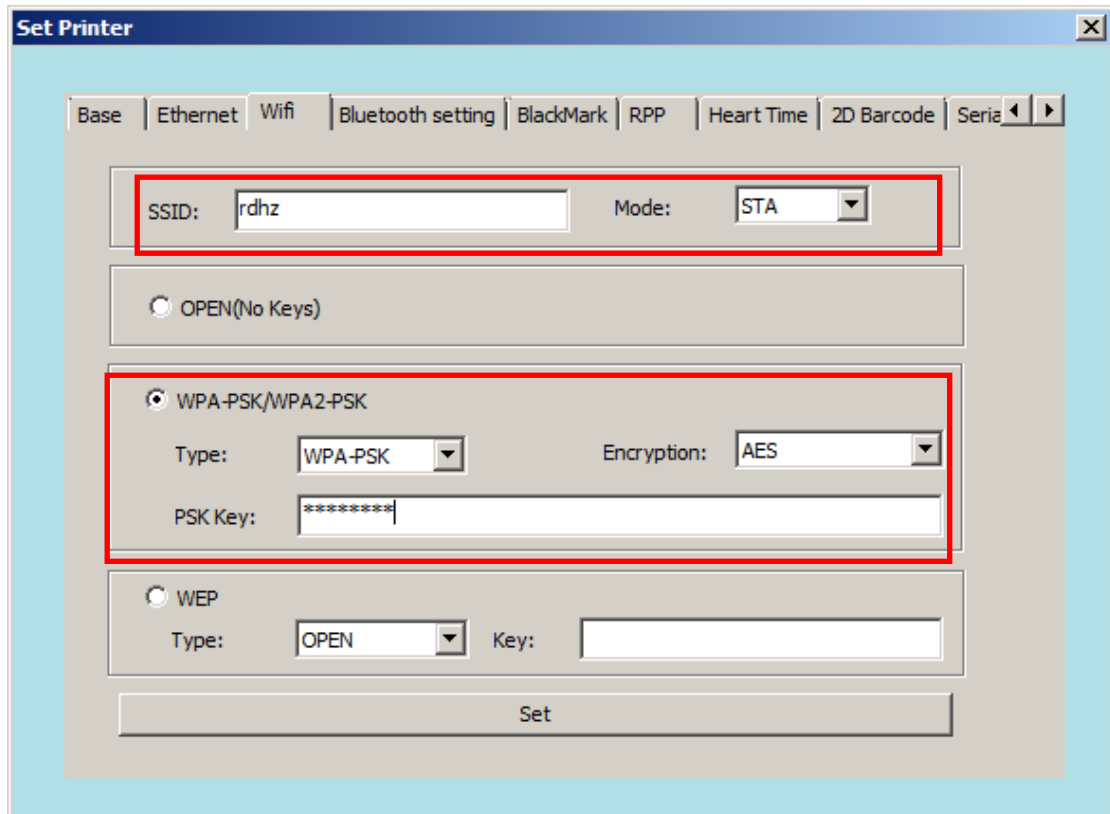
4. Enter the printer to connect the SSID (that is, the name of the radio), as well as the corresponding model.

5. Enter the wireless encryption type, and enter the WIFI password, as shown in Figure: for example to add wireless "rdhz", password encryption type WPA-PSK, and enter the wireless password, click "Settings".

6. Click "Settings", the printer will print out a set of radio parameter, please print a self-test page, view the print out of radio parameters with router alignment, such as the right, please wait patiently, the printer will within 1 minute, connected to a

wireless network. Such as print out the radio parameters and router inconsistencies, please re set, repeat the above steps.

Note: printer factory default IP address is 192.168.1.87. If the printer's IP address and the wireless router IP address is not the same as a segment and need to set the printer IP address to the address of the printer's IP address and router in a network segment. Set a specific IP address, please reference 3.2 "Ethernet" setting.



### 3.4 "Bluetooth Settings"

If the printer has a Bluetooth function, you can set the parameters of Bluetooth.

1. First hold printer form feed, referred to as the "feed" button, and then boot, print a self-test screen printer. From the self-test page, find out Bluetooth printer name and password pairs.

2 if there is a need, you can modify the Bluetooth pairing name and password, this time you need to use an integrated set of tools in the Bluetooth settings function, as shown below.

## Xiamen Rongta Technology Co., Ltd.

---

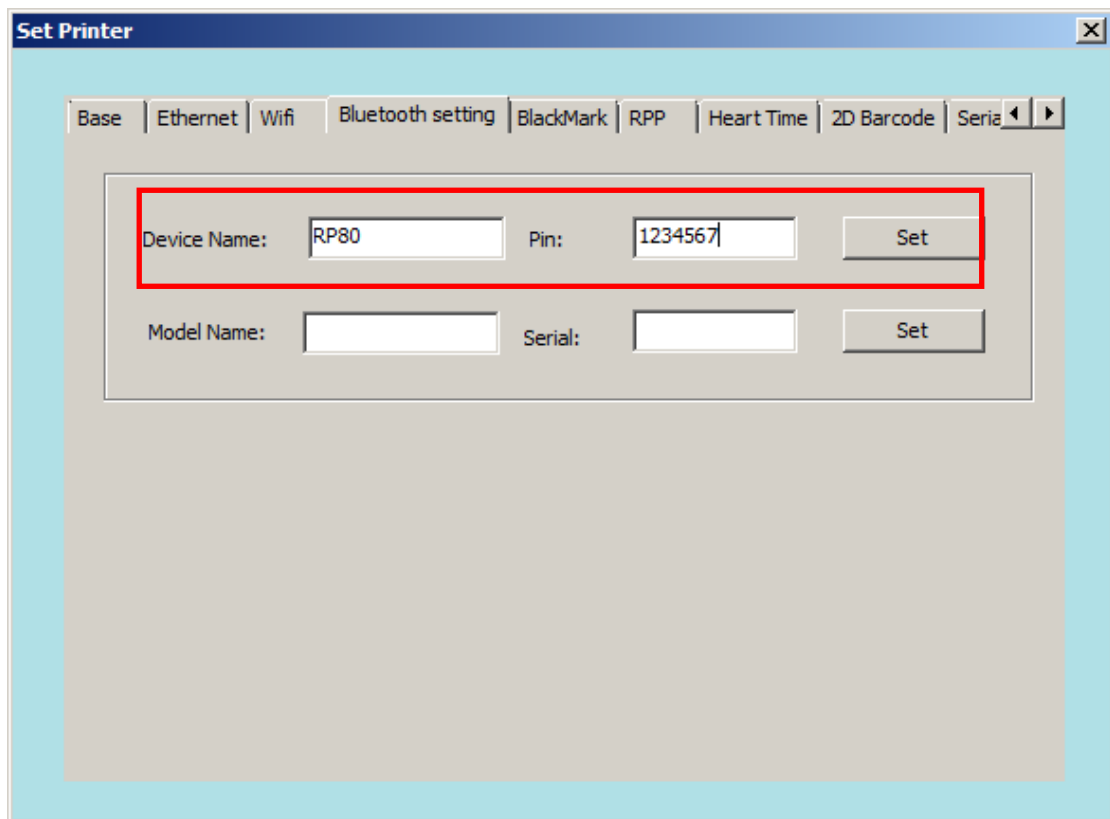
3 input printer Bluetooth to modify the device name and Pin, click the settings, the printer to restart, change the settings successfully.

4 open the main device, search the external Bluetooth device

5 to find just modify the Bluetooth printer; enter the corresponding password to complete the pairing.

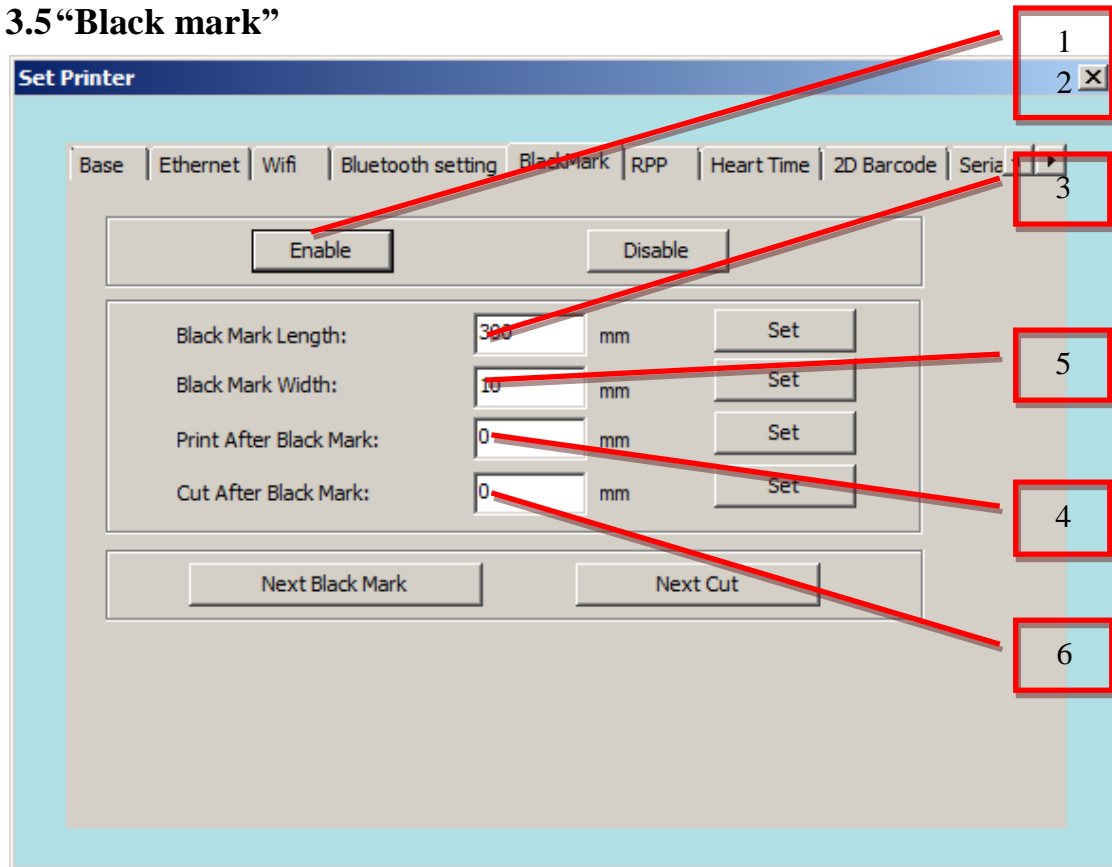
When matching, the thermal micro printer must be in the boot state.

Note: when pairing, please do not turn on multiple printers at the same time, or you may not be able to determine which printer is successful.



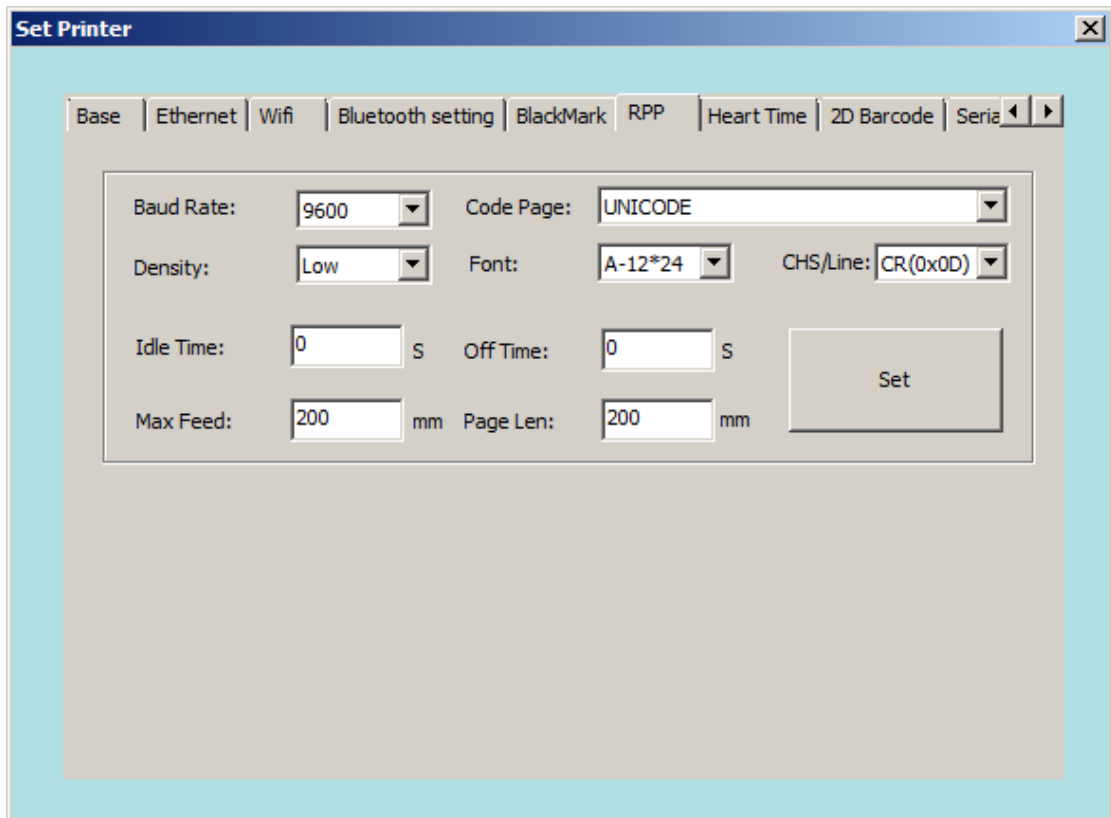
The screenshot shows a software window titled "Set Printer" with a light blue border. At the top, there is a navigation bar with tabs: "Base", "Ethernet", "Wifi", "Bluetooth setting" (which is selected), "BlackMark", "RPP", "Heart Time", "2D Barcode", and "Serial". Below the tabs, there is a form with two rows of input fields and "Set" buttons. The first row is highlighted with a red rectangle. It contains a "Device Name" field with the text "RP80", a "Pin" field with the text "1234567", and a "Set" button. The second row contains a "Model Name" field, a "Serial" field, and another "Set" button.

## 3.5 “Black mark”



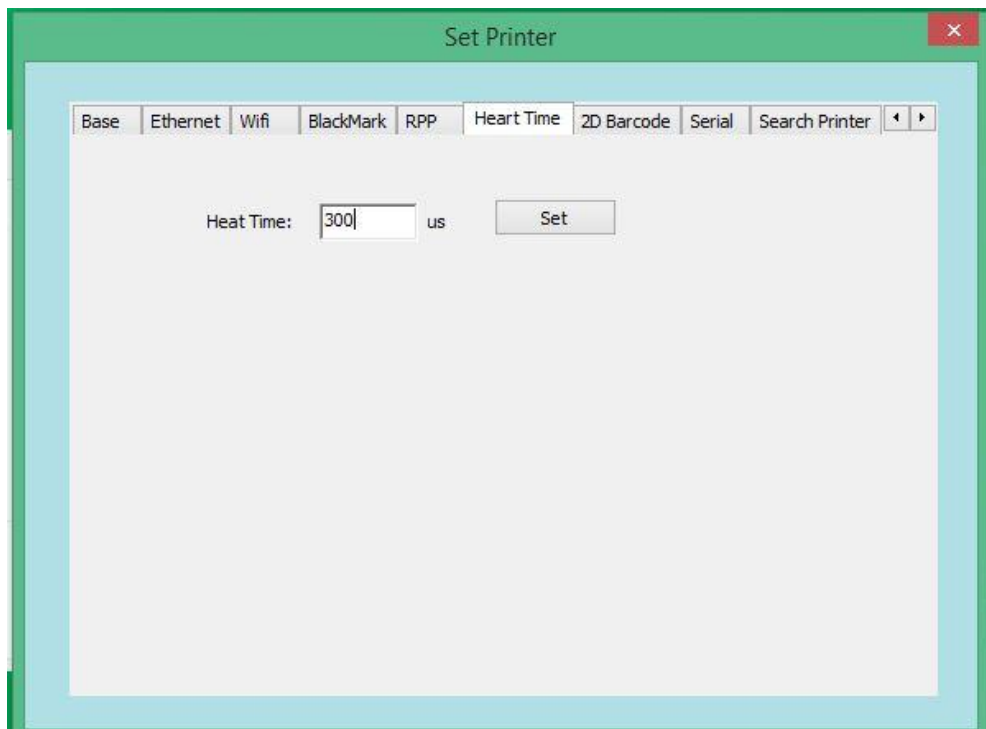
1. Click “Enable” to open black mark, printer will alarm one “di” if successful.
2. After that, please turn off printer, and turn on, only that, you can set black mark parameters.
3. Set printing position, for example, input 10mm, printer will print in 10mm position after black mark. After input, click “set”, printer will alarm one “di” if successful.
4. Set black mark width, longer than real black mark width, if the real is 10mm, you can set 20mm. After input, click “set”, printer don’t alarm if successful.
5. Set black mark length, the distance between two black marks, longer than real black mark length. If the real is 200mm, you can set 400mm. After input, click “set”, printer will alarm one “di” if successful.
6. Set cutting position, for example, input 10mm, printer will cut in 10mm position after black mark. After input, click “set”, printer will alarm one “di” if successful.

### 3.6 “Portable” printer baud rate, density etc.



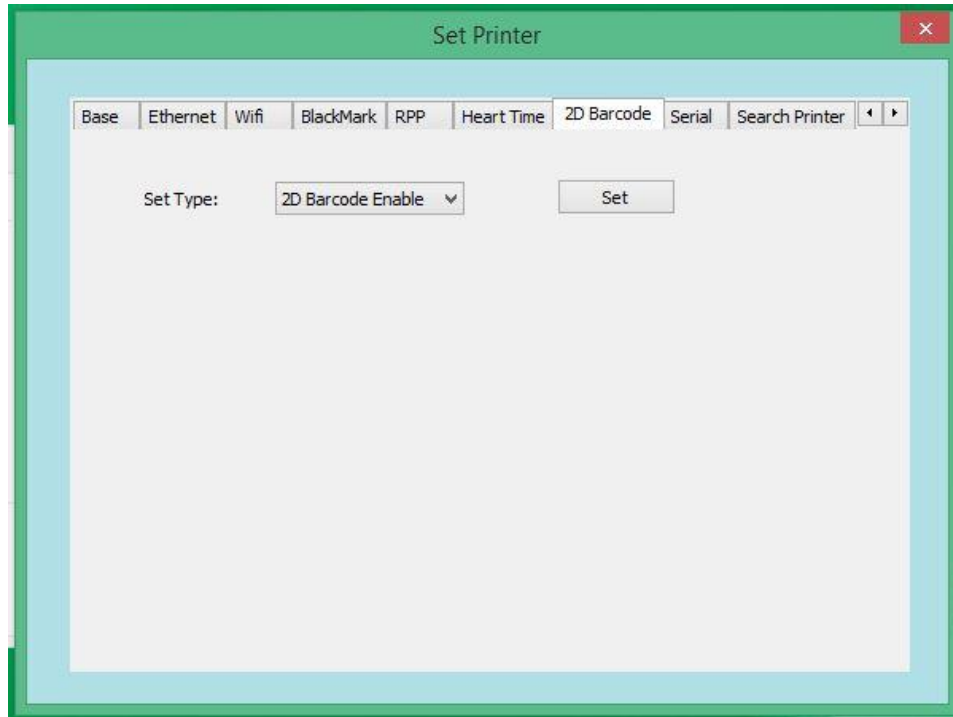
### 3.7 Mechanism heating time

Input the heating time what you need, and then click “set”. After setting, printing out the self-test page, to check if the heating time is the same to the time you set.

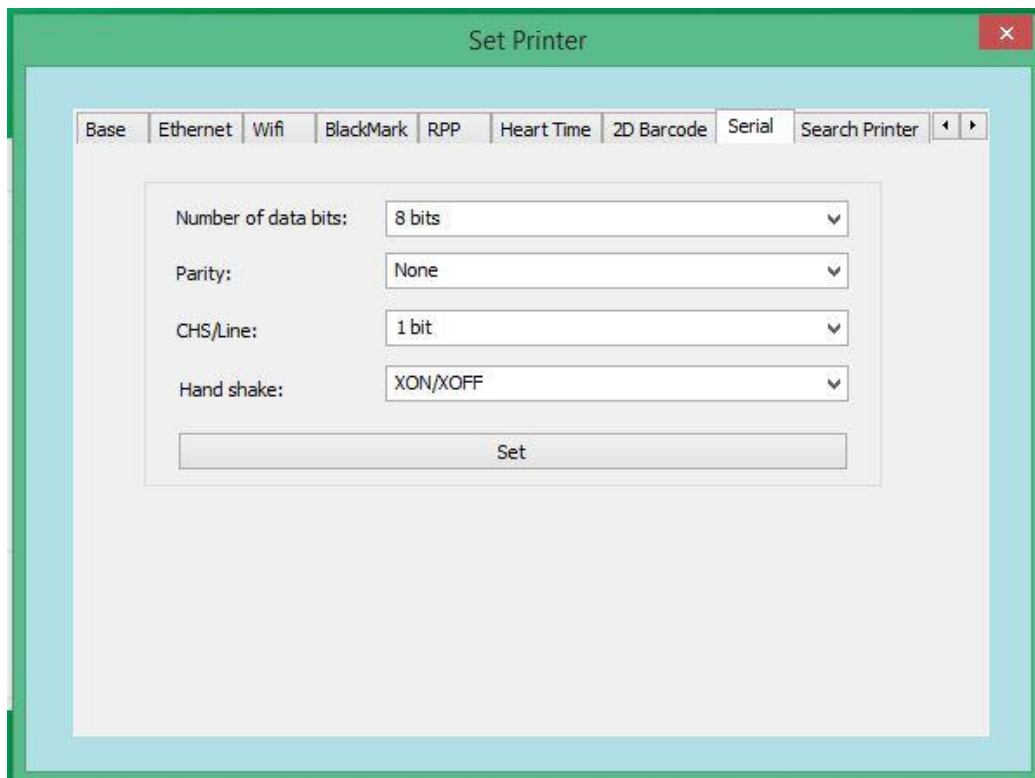


## 3.8“QR CODE”

This is a function which can set “allow not allow printing our QR code”, after setting, printing out the self-test page to check if the printer can print out the QR code.



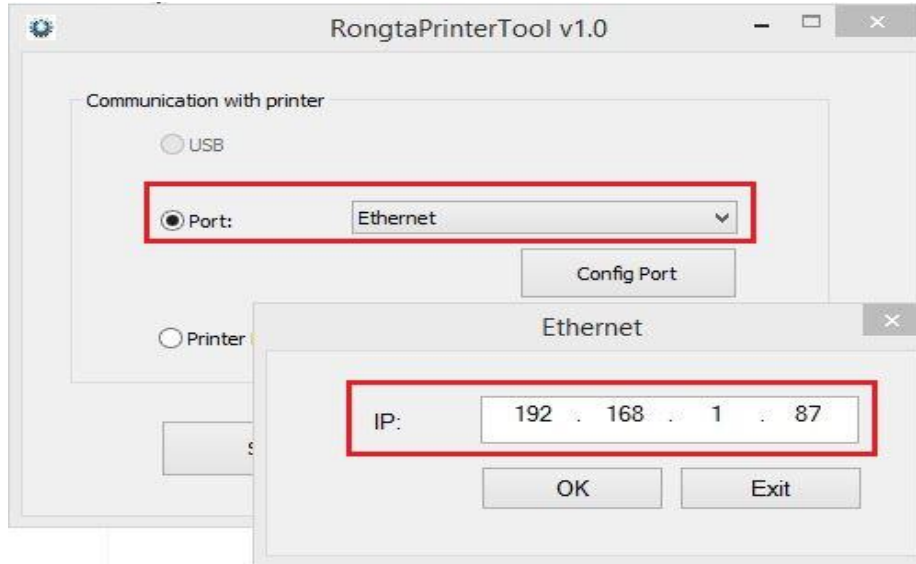
## 3.9“Serial port settings”



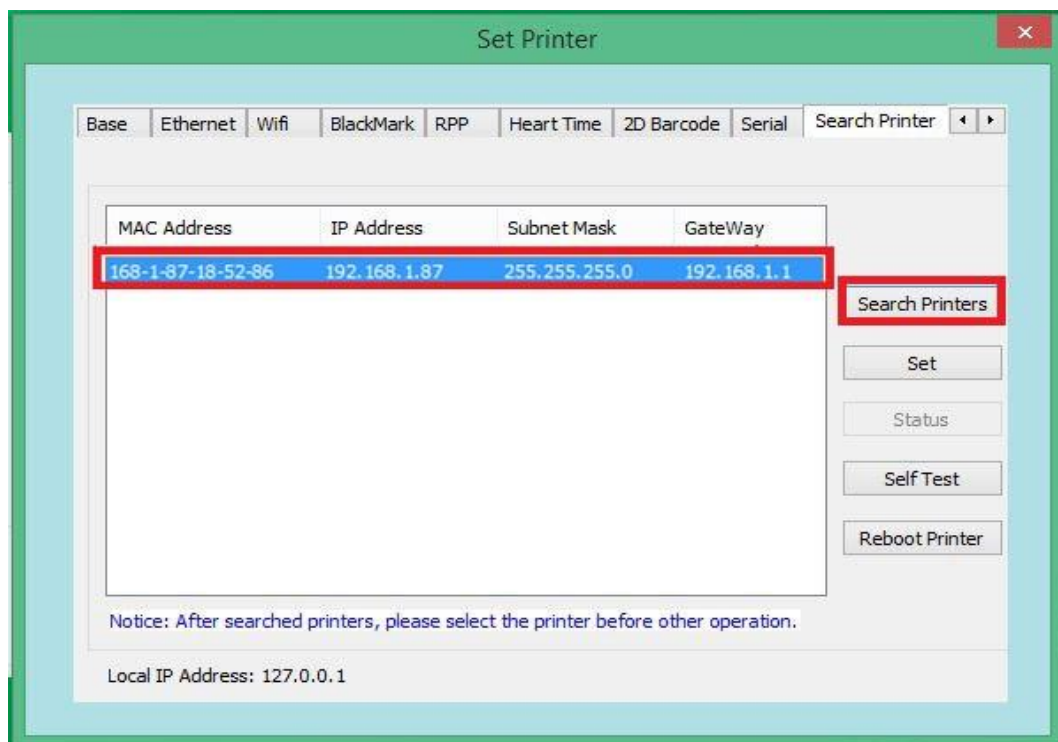
**Notice:** After serial port setting, the parameter is changed. You need to go back to main page to reset the parameter.

## 3.10 Search Printer

a. Connected internet cable, select network port, set IP addresses corresponding.



Select “search printer” success find the printer, will show MAC address, IP address corresponding, select printer, and then execute related configuration or operation.



**3.11 BIG5 (only used for Traditional Chinese language printing at Taiwan)**

